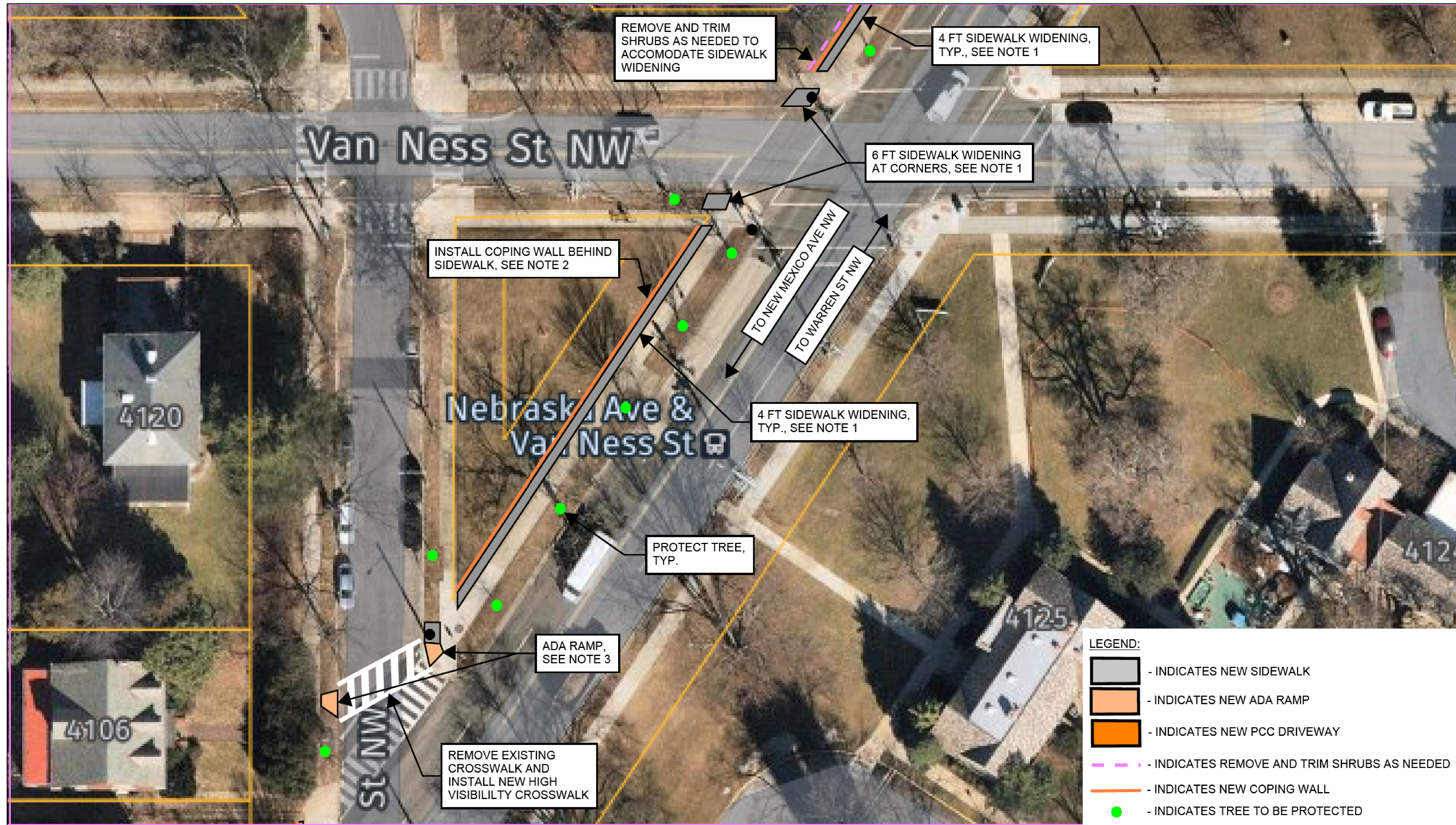


MATCHLINE, SEE SHEET 2 OF 11



MATCHLINE, SEE SHEET 4 OF 11

NOTE:

1. PCC SIDEWALK SHALL BE CONSTRUCTED PER DDOT STANDARD DRAWING 605.01.
2. PCC COPING WALL SHALL BE CONSTRUCTED PER DDOT STANDARD DRAWING 602.06.
3. PCC DRIVEWAY SHALL BE CONSTRUCTED PER DDOT STANDARD DRAWING 504.01.
4. REINFORCED CONCRETE RETAINING WALL SHALL BE CONSTRUCTED PER DDOT STANDARD DRAWINGS 703.01, 703.02 AND 703.03.

NOT TO SCALE

D.C. DEPARTMENT OF TRANSPORTATION
INFRASTRUCTURE PROJECT MANAGEMENT ADMINISTRATION

CITYWIDE SAFE ROUTES TO SCHOOL
SAFETY IMPROVEMENTS TO SIDEWALKS

NEBRASKA AVENUE NW FROM WARREN ST NW TO
NEW MEXICO AVENUE NW

PROJECT ENG. JSN
DESIGNED BY JSN / RCS
CHECKED BY RCS
DRAWN BY DRC
PROJECT MGR. BAB

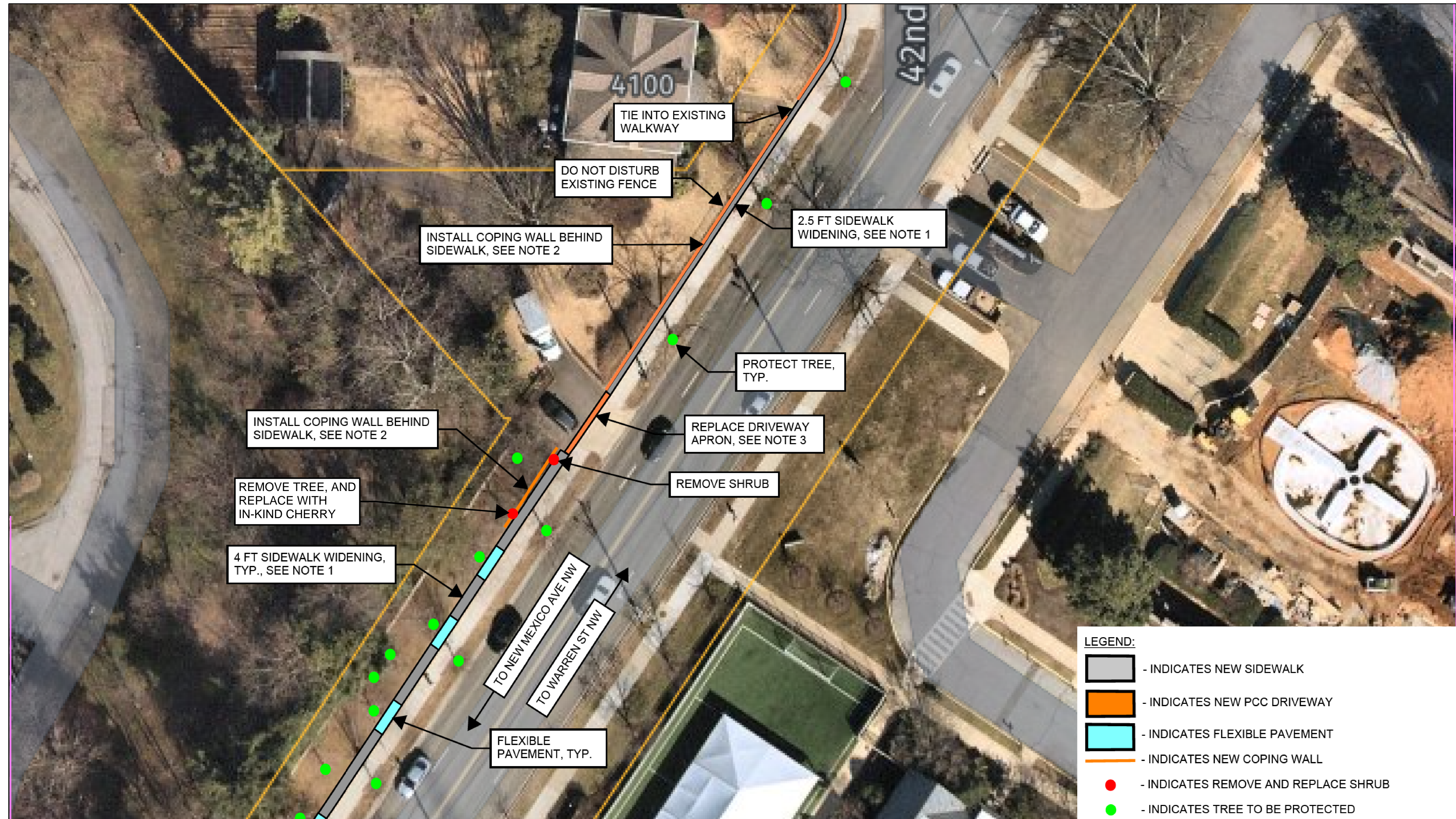
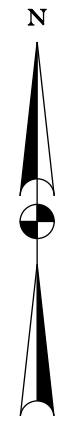
DIVISION CHIEF

DATE _____
FILE _____
SHEET 3 OF 11

d. DC GOVERNMENT OF THE DISTRICT OF COLUMBIA
MURIEL BOWSER, MAYOR

NO.	DESCRIPTION	NAME	DATE

MATCHLINE, SEE SHEET 3 OF 11



MATCHLINE, SEE SHEET 5 OF 11

NOT TO SCALE

NOTE:

1. PCC SIDEWALK SHALL BE CONSTRUCTED PER DDOT STANDARD DRAWING 605.01.
2. PCC COPING WALL SHALL BE CONSTRUCTED PER DDOT STANDARD DRAWING 602.06.
3. PCC DRIVEWAY SHALL BE CONSTRUCTED PER DDOT STANDARD DRAWING 504.01.

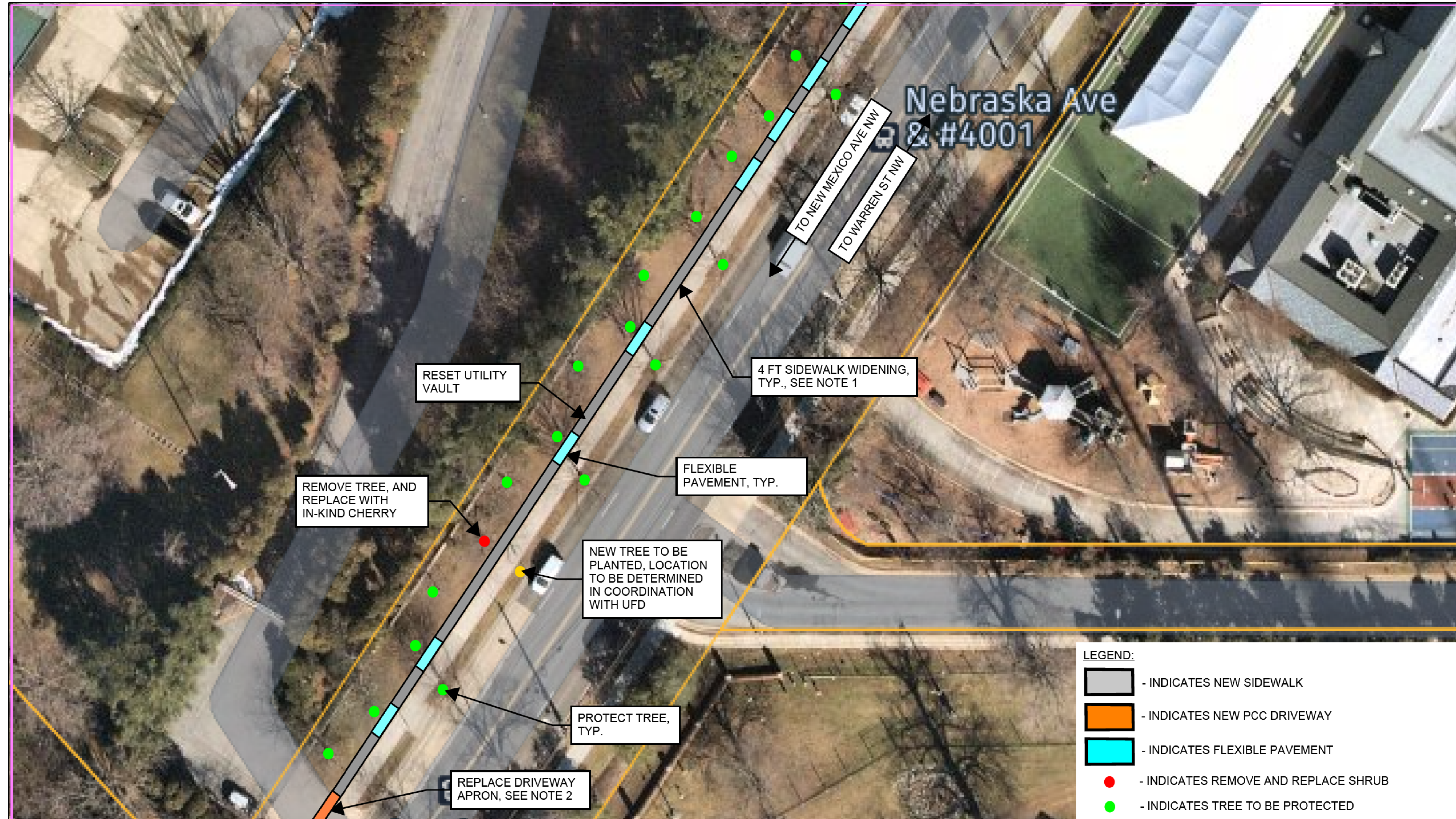
D.C. DEPARTMENT OF TRANSPORTATION INFRASTRUCTURE PROJECT MANAGEMENT ADMINISTRATION	
CITYWIDE SAFE ROUTES TO SCHOOL SAFETY IMPROVEMENTS TO SIDEWALKS	PROJECT ENG. <u>JSN</u> DESIGNED BY <u>JSN / RCS</u> CHECKED BY <u>RCS</u> DRAWN BY <u>DRC</u> PROJECT MGR. <u>BAB</u>
NEBRASKA AVENUE NW FROM WARREN ST NW TO NEW MEXICO AVENUE NW	
DIVISION CHIEF	
DATE _____	
FILE _____	
SHEET 4 OF 11	



NO.	DESCRIPTION	NAME	DATE
REVISIONS			

REG	STATE	PROJECT	SHEET NO.	TOTAL SHEETS
3	D.C.	DUP - 0000 (000)	5	11

MATCHLINE, SEE SHEET 4 OF 11



MATCHLINE, SEE SHEET 6 OF 11

NOT TO SCALE

NOTE:

1. PCC SIDEWALK SHALL BE CONSTRUCTED PER DDOT STANDARD DRAWING 605.01.
2. PCC DRIVEWAY SHALL BE CONSTRUCTED PER DDOT STANDARD DRAWING 504.01.

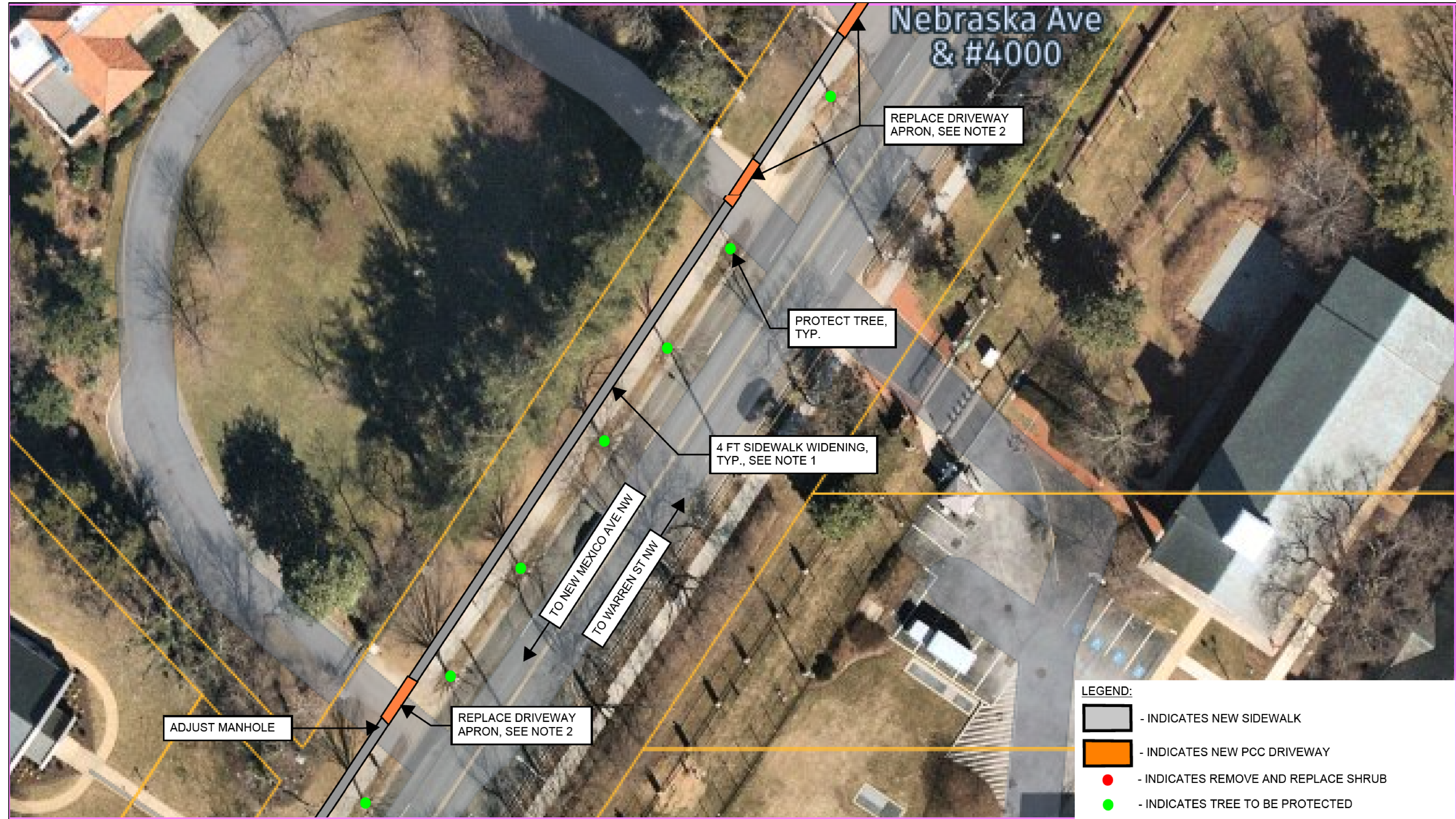
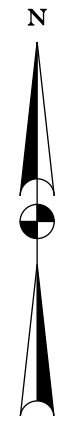
D.C. DEPARTMENT OF TRANSPORTATION INFRASTRUCTURE PROJECT MANAGEMENT ADMINISTRATION	
CITYWIDE SAFE ROUTES TO SCHOOL SAFETY IMPROVEMENTS TO SIDEWALKS	PROJECT ENG. <u>JSN</u> DESIGNED BY <u>JSN / RCS</u> CHECKED BY <u>RCS</u> DRAWN BY <u>DRC</u> PROJECT MGR. <u>BAB</u>
DIVISION CHIEF	
NEBRASKA AVENUE NW FROM WARREN ST NW TO NEW MEXICO AVENUE NW	
DATE _____	
FILE _____	
SHEET 5 OF 11	



NO.	DESCRIPTION	NAME	DATE
REVISIONS			

M:\2019\091904662A\Drawings\Nebraska Ave NW - Warren St to New Mexico 5 of 11.dgn
10:59 AM on Monday, May 17, 2021

REG	STATE	PROJECT	SHEET NO.	TOTAL SHEETS
3	D.C.	DUP - 0000 (000)	6	11



MATCHLINE, SEE SHEET 7 OF 11

NOT TO SCALE

NOTE:

1. PCC SIDEWALK SHALL BE CONSTRUCTED PER DDOT STANDARD DRAWING 605.01.
2. PCC DRIVEWAY SHALL BE CONSTRUCTED PER DDOT STANDARD DRAWING 504.01.

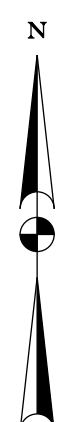
D.C. DEPARTMENT OF TRANSPORTATION INFRASTRUCTURE PROJECT MANAGEMENT ADMINISTRATION	
CITYWIDE SAFE ROUTES TO SCHOOL SAFETY IMPROVEMENTS TO SIDEWALKS	PROJECT ENG. <u>JSN</u> DESIGNED BY <u>JSN / RCS</u> CHECKED BY <u>RCS</u> DRAWN BY <u>DRC</u> PROJECT MGR. <u>BAB</u>
NEBRASKA AVENUE NW FROM WARREN ST NW TO NEW MEXICO AVENUE NW	
DIVISION CHIEF DATE _____ FILE _____ SHEET 6 OF 11	

NO.	DESCRIPTION	NAME	DATE
REVISIONS			

M:\2018\091904662A\Drawings\Nebraska Ave NW - Warren St to New Mexico Ave NW - 6 of 11.dgn
 10:59 AM on Monday, May 17, 2021

REG	STATE	PROJECT	SHEET NO.	TOTAL SHEETS
3	D.C.	DUP - 0000 (000)	7	11

MATCHLINE, SEE SHEET 6 OF 11



MATCHLINE, SEE SHEET 8 OF 11

NOT TO SCALE

NOTE:

1. PCC SIDEWALK SHALL BE CONSTRUCTED PER DDOT STANDARD DRAWING 605.01.
2. PCC DRIVEWAY SHALL BE CONSTRUCTED PER DDOT STANDARD DRAWING 504.01.

D.C. DEPARTMENT OF TRANSPORTATION INFRASTRUCTURE PROJECT MANAGEMENT ADMINISTRATION	
CITYWIDE SAFE ROUTES TO SCHOOL SAFETY IMPROVEMENTS TO SIDEWALKS	PROJECT ENG. <u>JSN</u> DESIGNED BY <u>JSN / RCS</u> CHECKED BY <u>RCS</u> DRAWN BY <u>DRC</u> PROJECT MGR. <u>BAB</u>
DIVISION CHIEF	
NEBRASKA AVENUE NW FROM WARREN ST NW TO NEW MEXICO AVENUE NW	
DATE _____	
FILE _____	
SHEET 7 OF 11	



NO.	DESCRIPTION	NAME	DATE
REVISIONS			

REG	STATE	PROJECT	SHEET NO.	TOTAL SHEETS
3	D.C.	DUP - 0000 (000)	8	11



MATCHLINE, SEE SHEET 7 OF 11

MATCHLINE, SEE SHEET 9 OF 11

LEGEND:

- INDICATES NEW SIDEWALK
- INDICATES NEW PCC DRIVEWAY
- INDICATES FLEXIBLE PAVEMENT
- INDICATES TREE TO BE PROTECTED

NOTE:

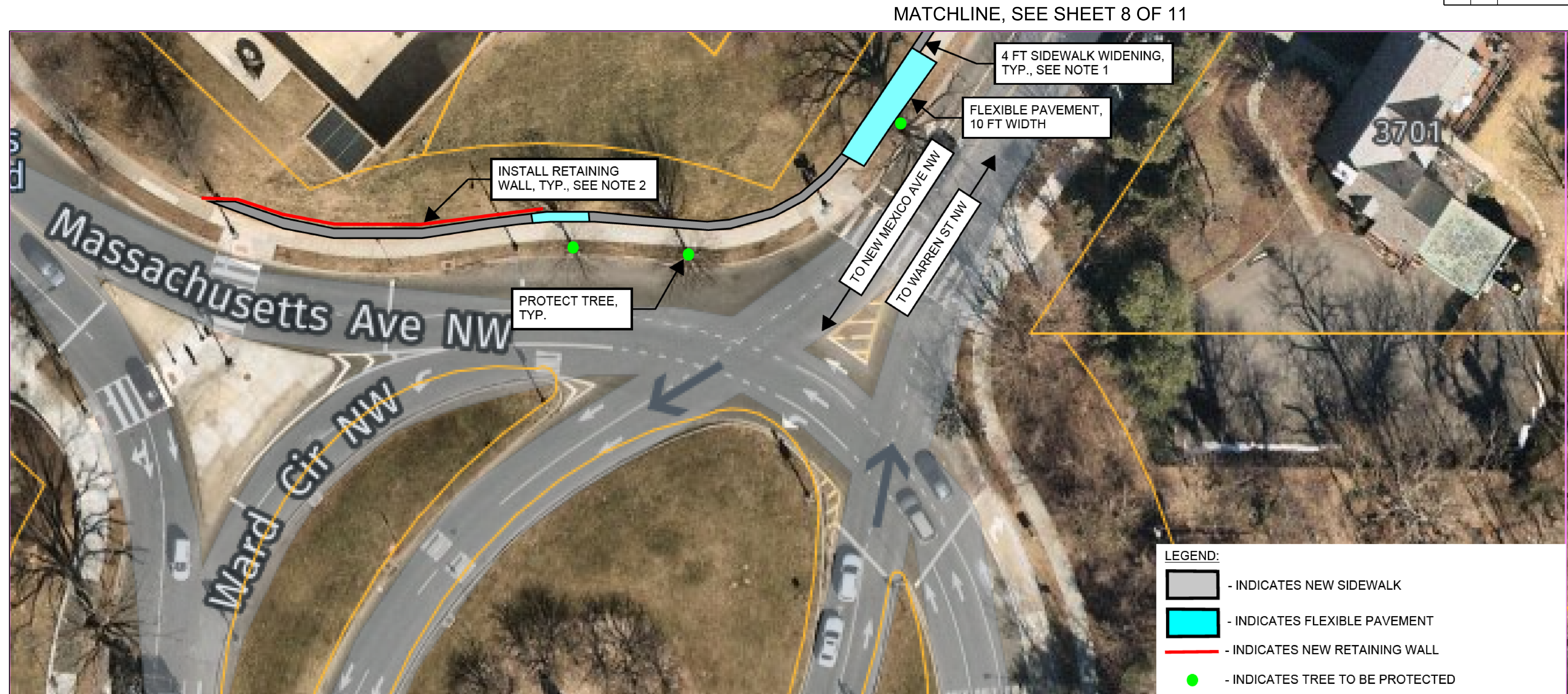
1. PCC SIDEWALK SHALL BE CONSTRUCTED PER DDOT STANDARD DRAWING 605.01.
2. PCC DRIVEWAY SHALL BE CONSTRUCTED PER DDOT STANDARD DRAWING 504.01.

NOT TO SCALE

D.C. DEPARTMENT OF TRANSPORTATION INFRASTRUCTURE PROJECT MANAGEMENT ADMINISTRATION	
CITYWIDE SAFE ROUTES TO SCHOOL SAFETY IMPROVEMENTS TO SIDEWALKS	PROJECT ENG. <u>JSN</u> DESIGNED BY <u>JSN / RCS</u> CHECKED BY <u>RCS</u> DRAWN BY <u>DRC</u> PROJECT MGR. <u>BAB</u>
DIVISION CHIEF	
NEBRASKA AVENUE NW FROM WARREN ST NW TO NEW MEXICO AVENUE NW	
DATE _____ FILE _____ SHEET 8 OF 11	

	NO.	DESCRIPTION	NAME	DATE
REVISIONS				

M:\2019\091904662A\Drawings\Nebraska Ave NW - Warren St to New Mexico 8 of 11.dgn
10:59 AM on Monday, May 17, 2021



MATCHLINE, SEE SHEET 8 OF 11

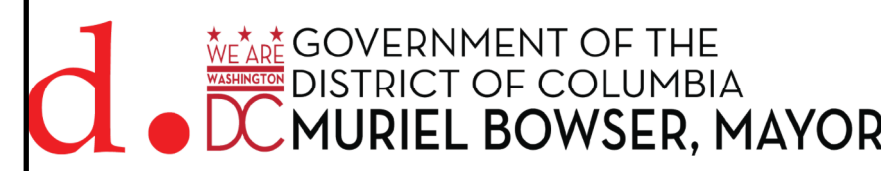
MATCHLINE, SEE SHEET 10 OF 11

NOTE:

1. PCC SIDEWALK SHALL BE CONSTRUCTED PER DDOT STANDARD DRAWING 605.01.
2. REINFORCED CONCRETE RETAINING WALL SHALL BE CONSTRUCTED PER DDOT STANDARD DRAWINGS 703.01,703.02 AND 703.03.

NOT TO SCALE

D.C. DEPARTMENT OF TRANSPORTATION INFRASTRUCTURE PROJECT MANAGEMENT ADMINISTRATION	
CITYWIDE SAFE ROUTES TO SCHOOL SAFETY IMPROVEMENTS TO SIDEWALKS	PROJECT ENG. <u>JSN</u> DESIGNED BY <u>JSN / RCS</u> CHECKED BY <u>RCS</u> DRAWN BY <u>DRC</u> PROJECT MGR. <u>BAB</u>
NEBRASKA AVENUE NW FROM WARREN ST NW TO NEW MEXICO AVENUE NW	
DIVISION CHIEF	
DATE _____ FILE _____ SHEET 9 OF 11	



NO.	DESCRIPTION	NAME	DATE
REVISIONS			

M:\2019\091904662A\Drawings\Nebraska Ave NW - Warren st to New Mexico 9 of 11.dgn
10:59 AM on Monday, May 17, 2021

REG	STATE	PROJECT	SHEET NO.	TOTAL SHEETS
3	D.C.	DUP - 0000 (000)	10	11

MATCHLINE, SEE SHEET 9 OF 11



MATCHLINE, SEE SHEET 11 OF 11

NOT TO SCALE

NOTE:

1. PCC SIDEWALK SHALL BE CONSTRUCTED PER DDOT STANDARD DRAWING 605.01.

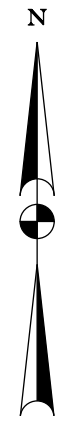
D.C. DEPARTMENT OF TRANSPORTATION INFRASTRUCTURE PROJECT MANAGEMENT ADMINISTRATION	
CITYWIDE SAFE ROUTES TO SCHOOL SAFETY IMPROVEMENTS TO SIDEWALKS	PROJECT ENG. <u>JSN</u> DESIGNED BY <u>JSN / RCS</u> CHECKED BY <u>RCS</u> DRAWN BY <u>DRC</u> PROJECT MGR. <u>BAB</u>
DIVISION CHIEF	
NEBRASKA AVENUE NW FROM WARREN ST NW TO NEW MEXICO AVENUE NW	
DATE _____	
FILE _____	
SHEET 10 OF 11	



NO.	DESCRIPTION	NAME	DATE
REVISIONS			

REG	STATE	PROJECT	SHEET NO.	TOTAL SHEETS
3	D.C.	DUP - 0000 (000)	11	11

MATCHLINE, SEE SHEET 10 OF 11



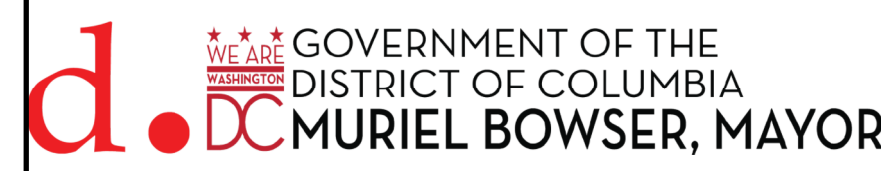
LEGEND:
 [Grey Line] - INDICATES NEW SIDEWALK
 [Green Dot] - INDICATES TREE TO BE PROTECTED

NOT TO SCALE

NOTE:

- PCC SIDEWALK SHALL BE CONSTRUCTED PER DDOT STANDARD DRAWING 605.01.

D.C. DEPARTMENT OF TRANSPORTATION INFRASTRUCTURE PROJECT MANAGEMENT ADMINISTRATION	
CITYWIDE SAFE ROUTES TO SCHOOL SAFETY IMPROVEMENTS TO SIDEWALKS	PROJECT ENG. <u>JSN</u> DESIGNED BY <u>JSN / RCS</u> CHECKED BY <u>RCS</u> DRAWN BY <u>DRC</u> PROJECT MGR. <u>BAB</u>
NEBRASKA AVENUE NW FROM WARREN ST NW TO NEW MEXICO AVENUE NW	DIVISION CHIEF DATE _____ FILE _____ SHEET 11 OF 11



NO.	DESCRIPTION	NAME	DATE
REVISIONS			

M:\2019\091904662A\Drawings\Nebraska Ave NW - Warren St to New Mexico II of II.dgn
10:59 AM on Monday, May 17, 2021