

Government of the District of Columbia

Department of Transportation



d. Office of Contracting and Procurement

DISTRICT ARCHITECT AND ENGINEER (“A/E”) SCHEDULE TASK ORDER (“TO”) SOLICITATION

Date: July 13, 2021

Category of Services: Category C – Bridge Design

Title: Request for Qualifications (“RFQ”) for the Rehabilitation of **Southwest/southeast Freeway Bridge (Bridge 1103, 1104 and 1109) including all approaching ramps– Phase 2**

Solicitation No.: OCPTO210001

1. INTRODUCTION AND BACKGROUND

The District Department of Transportation (DDOT) is in the process of planning for rehabilitation of Southwest/southeast Freeway Bridge (Bridge 1103, 1104 and 1109) between Half Street and 2nd Street, Freeway Bridge over CSXT railroad, New Jersey Avenue and Virginia Avenue S.E. in southwest Washington DC.

An in-depth inspection of each of the Approach Ramps for bridges 1103, 1104 and 1109 has been completed during Phase 1 of the project in 2018 to assess the condition, evaluate repair alternatives and to establish preliminary repair costs. The inspection has identified several substructure and superstructure deficiencies including spalling, delamination, cracking, deck leakage, unknown girder tendon strength, foundation batter micro pile reinforcement recommendations, and bearing failure requiring repair. The primary goal of the project is to perform repairs and rehabilitation of bridge components in concern in order to extend the level of service of the structure. A digital copy of the condition assessment report along with appendices is available for download https://dcgovict-my.sharepoint.com/:f:/g/personal/amohamed_ddot_dc_gov/EvNwJKk7k_xCki9t687de4QBSoQfPfOefwiMicxPgm0F4A?e=oChArp

Phase 2 will include all work necessary for the development of construction plans, specifications, cost estimates, unit price analysis, construction schedule, value engineering, benefit cost analysis and all bid documents for the rehabilitation of the bridges, associated ramps, and immediate approach roadways to bridges; project coordination with utility companies and all other stakeholders affected by this project; coordination of all permit requirements; and, coordination of all environmental processes and documentation.

2. TASK ORDER COMPETITION

The District is soliciting qualifications from three (3) firms awarded an A/E schedule containing Category C – Bridge Design including the provisions of the A/E contract. Firm-Fixed-Priced Task Order (TO) awards are anticipated. The three firms are:

1. CH2M Hill D.C., P.C.
2. HDR Engineering
3. Hardesty & Hanover

3. ATTACHMENTS INCORPORATED BY REFERENCE

- Consultant’s respective IDIQ Contract terms and clauses
- The manual and guides listed below:

All District of Columbia, Department of Transportation (“DDOT”) and Federal Highway Administration (“FHWA”) requirements and regulations apply. All design work will comply with current design practices and code requirements of the District of Columbia, Department of Transportation (“DDOT”), Federal Highway Administration (“FHWA”) and as well as the latest edition of the following (at the time of the contract award):

- District of Columbia Department of Transportation - Design and Engineering Manual, 2019
https://ddot.dc.gov/sites/default/files/dc/sites/ddot/page_content/attachments/DEM-2019-01-01_DDOT_DEM_Updates_FINAL.PDF
- DDOT Standard Specifications for Highways and Structures, Dated 2013, issued by District of Columbia Department of Transportation.,
https://ddot.dc.gov/sites/default/files/dc/sites/ddot/publication/attachments/DDOT_StandardSpecificationsHighwaysStructures_2013.pdf
- Rehabilitation of Southwest/southeast Freeway Bridge (Bridge 1103, 1104 and 1109) between Half Street and 2nd Street, Freeway Bridge over CSXT railroad, New Jersey Avenue and Virginia Avenue S.E. Condition Assessment report along with all appendices (Phase 1)
https://dcgovict-my.sharepoint.com/:f/g/personal/amohamed_ddot_dc_gov/EvNwJKk7k_xCki9t687de4QBSoQfPfOefwiMicxPgm0F4A?e=IikyQq

- Latest NBI Report for the bridges https://dcgovict-my.sharepoint.com/:f/g/personal/amohamed_ddot_dc_gov/EgBcXBKhYrIPoKt46uKsIXMB9beB6MVLU_EevHSrPdrV_w?e=kGFvyi
- Applicable requirements of the Federal Highway Administration (FHWA);
- AASHTO LRFD Bridge Design Specifications (Latest Version);
- AASHTO LRFD Bridge Construction Specifications;

Key Personnel

- PM/Lead Designer -Bridge engineer with minimum 10 years' experience designing, analyzing, and rehabilitating pre-stressed concrete bridges.

4. DISADVANTAGED BUSINESS ENTERPRISE GOAL

A 19% DBE subcontracting goal for firms certified as DBE's in accordance with Title 49, Subtitle A, Part 26 of the CFR has been established for this federally assisted contract. The contract will be subject to all applicable Federal regulations including Title VI of the Civil Rights Acts of 1964. If Offeror does not meet the DBE goal, then Offeror will be required to demonstrate good faith efforts in accordance with Title 49, Subtitle A, Part 26 of the CFR.

5. SCOPE OF WORK ("SOW")

The services to be provided by the Consultant on this phase of the project will include but is not limited verification of findings and recommendations from Phase1 report of the project, preliminary and final engineering design, bid document preparation, and environmental and historic compliance documentation. Phase 1 of the project has been completed and a digital copy of the condition assessment report along with appendices is available for download as indicated above.

A. Verification of Phase I Findings

- The selected Consultant shall conduct a walk-through site visit to become familiar with the project and related facilities. All site visits shall be coordinated with the DDOT Project Manager.
- Review previous study reports: The Consultant shall review the following previous study reports including but not limited to:
 - September 2018, Rehabilitation of Southwest/southeast Freeway Bridge (Bridge 1103, 1104 and 1109) between Half Street and 2nd Street, Freeway Bridge over CSXT railroad, New Jersey Avenue and Virginia Avenue S.E. Condition Assessment report along with all appendices (Phase 1),
 - Recent NBI reports

The product of the review will be a list of any apparent missing information of studies/inspection/testing that will be needed to complete Phase 2 of the project.

The work also includes the preparation and submittal of the EA, structure Type, Size and Location (TS&L) report and plans, final engineering and other reports discussed below. It is expected that a review will be performed on submittal and comments will be returned within the set review period as much as possible to keep the project on schedule. At the completion of each review period for submittal, a comment resolution meeting with reviewing agencies will be scheduled and held by the Consultant with the approval of DDOT. The scope of work includes public outreach and stakeholder coordination efforts for the duration of the design phase and as required by NEPA and DDOT standards and guidelines.

All design efforts will include civil, environmental, geotechnical, hydraulics, structural, architectural, landscape, MEP, lighting, Traffic/MOT, utilities (water, sewer, gas, electric), ROW, permitting, Project Management, and subconsultant oversight.

B. Review Existing documents

- The selected Consultant shall conduct a walk-through site visit to become familiar with the project and related facilities. All site visits shall be coordinated with the DDOT Project Manager.
- Review previous study reports: The Consultant shall review the following previous study reports including but not limited to:
 - o September 2018, rehabilitation of SE/SW freeway 30% Final Study Report by the previous Consultant
 - o DDOT NBIS Bridge inspection reports (latest)
- The product of the review will be a list of any apparent missing information of studies/inspection that will be needed for the EA or final design.

C. Final Design

The Consultant shall refine the concept, look at the options, and provide the final options, including engineering requirements and environmental impacts of the alternatives being considered for rehabilitation of SE/SW freeway project including approaching ramps. This phase will entail agency / stakeholder coordination, public involvement, traffic studies, data collection, survey and geotechnical investigation work, final engineering design (for the preferred alternative) and environmental document preparation and compliance with NEPA for the project. Work includes but not limited to the following:

- Prepare ROW/ Surveying Plans, and identify early on the project ROW needs
- Determine the need for safety appurtenances
- Identify project limits
- Conduct public outreach and get feedback from the community for the project
- Identify future improvements in the area
- Include all detour routes and any available staging and construction sequence requirements in the Maintenance of Traffic Plan

- Determine if bus operations are involved and if the buses can make the necessary stops and turns
- Seismic (Final) and scour analysis, prepare report based on findings if applicable
- Compliance with NEPA
- Prepare Section 106 Evaluation/coordination
- Develop Environmental Assessment Documentation
- Environmental Analysis
- Identify Environmental Constraints/Impacts (Natural/Built Environment)
- Document Agency Coordination/Public Involvement
- Stakeholder/Agency Coordination (FHWA, NPS, NCPC, USACE, DDOEE, SHPO, etc.)
- Secure Section 404/401 CWA permits (USACE/DDOEE)
- Coordinate and Submit Plans for Section 10 Rivers and Harbors Act Permit (USACE) if applicable
- Conduct Section 7 ESA consultation (USFWS/NMFS/NPS)
- Get approval of the plans by CFA, NCPC and DCSHPO
- Prepare bridge plans as per DDOT DEM
- Obtain finding of no significant impact for the NEPA document
- Hydrology and Hydraulics/Drainage Report
- Provide a final cost estimate, including contingency
- Material sample and spec that will be used on the project
- Design and submittals shall be as per DDOT DEM, NEPA, and FHWA requirements.
- Provide final structural, civil, electrical, drainage and other plans as required
- Prepare final landscape/turf and planting plans
- Update utility plans as per DDOT DEM
- Obtain all permit applications, prepare the document and submit once signed; follow-up on the permit for the project

D. Design Criteria

- The latest codes, engineering manuals, standards, guidelines and construction specifications published by AASHTO, DDOT and FHWA shall be used. The submittals and document preparations shall be as per DDOT DEM, 2019 and NEPA. If there is/are conflicts, the most stringent will apply unless approved by the Chief Engineer.
- All submittals shall be 2-copies of hard copy, 2 copies of electronic files in pdf format and in the application the document was prepared (native files), input and output files shall be submitted too.
- Prepare Section 106 Evaluation/Coordination
- Seismic and scour analysis report
- Hydrology and Hydraulics/Drainage Report
- Provide final Engineering report details, design issues, resolution reports, status of project and other relevant information
- Prepare Type, Size and Location report
- Document Agency Coordination/Public Involvement/scoping meeting
- Provide a final cost estimate, including contingency
- Material sample and spec that will be used on the project
- Geotechnical report and final foundation design
- Conduct cadastral survey, and topography survey and prepare ROW plans including meats and bounds

E. Project Management

- The service to be provided by the Consultant shall include preparing the project EA and the final design, consistent with NPS requirements, DDOT's DEM, the Quality Assurance / Quality Control and other local and federal regulations and codes.
- Project Management shall include bi-weekly coordination meetings with DDOT and other stakeholders. The Consultant shall prepare agenda, action items, and minutes of meetings, including list of attendees and project schedule. In addition, monthly progress reports and invoices in DDOT format shall be delivered to DDOT project manager.
- Consultant , DDOT and other stakeholders shall have a kickoff meeting to discuss critical success factors for the project deliverables, standards that will be used on the project, schedule, and goals within a week of Notice to Proceed (NTP).

- Consultant shall maintain a document control management center on DDOT's SharePoint site that can be accessed by DDOT and the Consultant' from the beginning to the end of the contract. In addition, maintain a project contact list and issue logs. All submittals including meeting minutes, sign-in sheet, agenda items, action item list, contact list, Environmental Assessment (EA) and supporting documents, Final Engineering, and other reports shall be uploaded to DDOT SharePoint site by the Consultant. Consultant shall maintain a back-up file of all the files on the DDOT SharePoint project folder to make sure at the end of the project all the files are available.

E.1 Records Management - Consultant shall maintain a file management system including all project related files generated over the course of the design process. Consultant shall use the DDOT SharePoint site for submittal to DDOT and maintain all submittal both paper copy and electronic copy with the firm and make it available to DDOT and other stakeholders when requested.

E.2 Bi-weekly Project Progress Meetings - The Consultant PM shall conduct bi-weekly Project Meetings with DDOT PM and other stakeholders. Consultant shall complete agenda, sign-in sheet, action items, meeting minutes, project contact list, and issue logs for each Project Meeting and distribute to the attendees within 72 hours (3 business days); after getting comment, Consultant shall distribute the final meeting minutes within 48 hours (2 business days).

F. Environmental Clearances

Introduction

The work under this task order includes preparing and getting approval of Environmental Clearance in accordance with the National Environmental Policy Act (NEPA), Section 404/401 Clean Water Act, and Section 10 of the Rivers and Harbors Act for the proposed work on the project. The EA will be prepared for the project as per NEPA, DDOT-DEM and NPS requirements; the draft EA will be submitted to NPS and DDOT for review and comment. The EA document is being prepared for the project and NPS and close coordination with NPS is required to get feedback and stakeholders review comments. As a federal action, the transfer of park property requires consideration of the potential impacts to the natural, social, and economic environment, pursuant to NEPA. Since the potential for significant environmental impacts is not anticipated, but unknown, an EA is the appropriate class of action under NEPA.

G. Hydrologic/Hydraulic Study Analysis

Consultant shall conduct Hydrologic/hydraulic study and develop existing vs. proposed conditions hydraulic characteristics including water surface elevations (WSEs).

Consultant shall analyze the impact of each alternatives and perform final design of the preferred alternatives foundations in accordance with the DDOT Design and Engineering Manual (June 2017), FHWA and AASHTO latest publications for bridge over a water body, for scour and Hydraulics and Hydrology and other local and federal regulations.

The Consultant shall review the bridge inspection and concept study reports and conduct field investigation to better understand the existing foundation. Consultant shall summarize the characteristics of the project and the potential for scour and recommended countermeasures and impact of the structures in the Hydraulics/Hydrology and Scour Analysis Report and incorporate the outcome in the final foundation design.

H. Subsurface Exploration and Geotechnical Engineering

Geotechnical Engineering: The scope of work consists of preparing Geotechnical Report and Final Foundation Design in accordance with the DDOT-DEM 2019, FHWA publications, AASHTO (for the preferred alternative).

I. Survey

Prepare proposal to provide a complete Transfer of Jurisdiction documents. The documents will consist of a Plat with supporting descriptions to transfer lands between the District of Columbia and the National Parks Service. Perform a cadastral survey and topography survey of the project areas.

Project Location Map (Rehabilitation of SE/SW freeway)

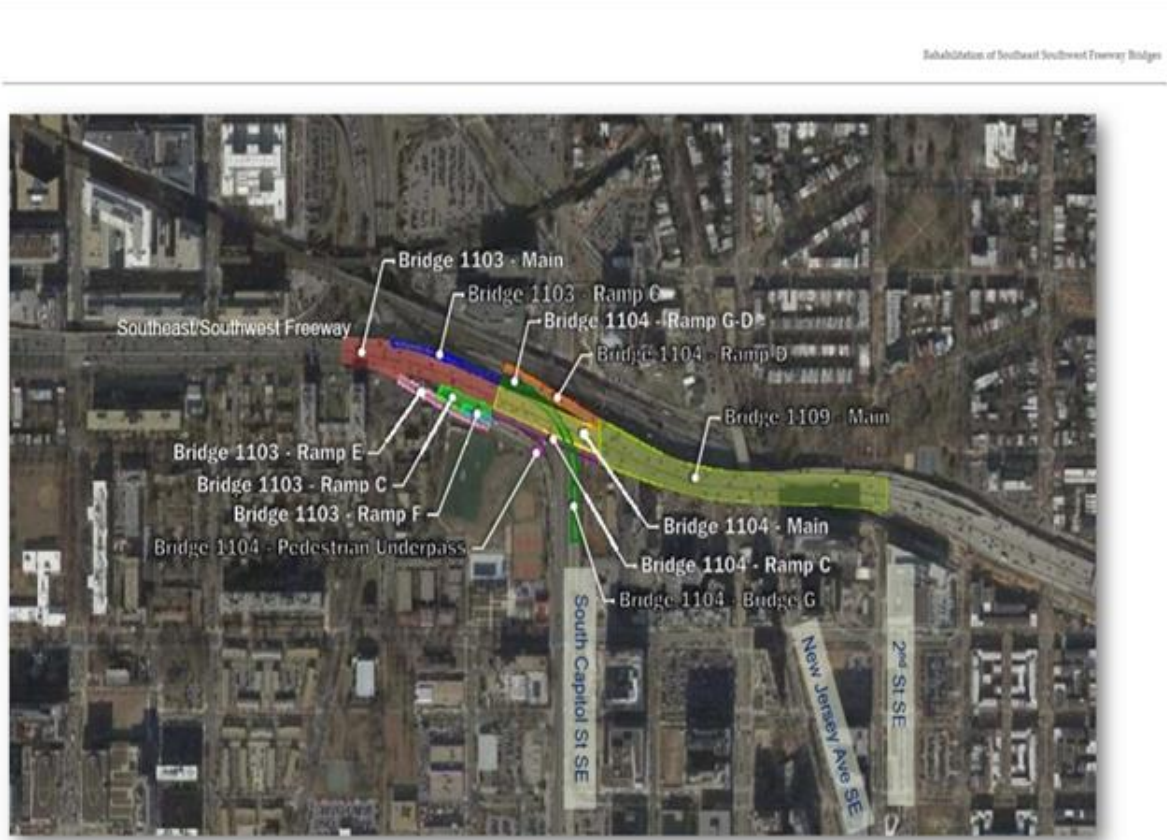


Figure 1. Map of the project site, identifying the bridges and the associated ramps included in the scope of services

6. DELIVERABLES – Final design

Due to the dynamic nature of design requirements, the District utilizes the District of Columbia Department of Transportation - Design and Engineering Manual, 2019 and latest AASHTO specifications and FHWA guidelines in determining the deliverables required under this TO. Submittals shall be in electronic copy, in PDF and in the application software the document is created (Native file). All drawings shall be done using MicroStation V8i (SS2) and Geopack; all surveying files will be provided in TIN format. Electronic submission of Drawings shall be in PDF and DGN format as mentioned in the DDOT Design and Engineering Manual.

Deliverables ()

Item	Assumption
Notification (Right of Entry) Letters	
Consulting Party Meeting Materials	Material for up to three (3) meetings
Scoping Package and Invitation Letters	
Section 106 Initiation and Consulting Party Letters	
Environmental Assessment documents as per NEPA	
Wetland Delineation Report	
Public Meeting Displays, Brochure, and Comment Sheet	
Documented Response to Substantive Comments	
WOUS Permit Applications	
Final Engineering Report including concepts considered in the EA and the selected concept	
Final Engineering Plans per DEM TS&L report	
Final Engineering Estimate	
Final Engineering Specifications	
Geotechnical Engineering Report	
Presentation materials for meetings with (CFA, NCPC, NPS, stakeholders, etc.)	
Technical Memorandum regarding field review with DDOT and FHWA	
Meeting Agenda, Minutes and Sign-in Sheet	
Action Items List and Issues Log	
Project Contact List	
Project Letters, Door Knockers, etc.	
Quality Assurance Statement	
Draft Transfer of Jurisdiction Plat for DDOT	

All project deliverables required for each phase throughout the project life shall be prepared per DDOT Design and Engineering Manual, Chapter 12 Project Deliverables.

7. PERIOD OF PERFORMANCE:

- **18 months from Award.**

8. INSTRUCTIONS TO OFFERORS

8.1 Qualifications Due Date and Receipt

8.1.1 Submissions are subject to the following limitations:

8.1.1.1 SF 330, Section F, shall not exceed 7 projects.

8.1.1.2 SF 330, Section H, shall not exceed 20 pages.

8.1.2 Qualifications are due on or before 2:00 PM on August 03, 2021.

8.2 Organization and Content

8.2.1 Offerors shall submit qualifications on the Standard Form 330 to include all parts and sections via email to ddot.aeschedule@dc.gov and Jeralyn Johnson at Jeralyn.johnson@dc.gov. Inclusion of other materials by reference will not be considered.

8.2.2 Section H of the SF 330 shall provide information regarding the following topics. The information should demonstrate an understanding of the requirement or expound upon the experience and qualifications presented in the context of the requested information. The answers provided will be evaluated as a part of the qualifications in accordance with the evaluation criteria in Section 10 of this TO RFQ.

8.2.3 Describe your understanding of the project's complexities, and your experience and qualifications in overcoming the type of complexities identified.

8.2.4 Provide qualifications and experience regarding implementing best practices and strategies for Bridge Rehabilitation design.

8.2.5 Avoidance and mitigation of impacts to the environment, NPS and other private property;

8.2.6 Communication and coordination between stakeholders;

8.2.7 Experience utilizing QA/QC processes and their ability to ensure contract compliance; and

8.2.8 Identification, management and mitigation of project risks.

8.2.8 Provide relevant information regarding Factor 4 - Past Performance. Offerors should note that Factor 4 relates to the administration of the experience with regards to cost control, quality of work, and compliance with performance schedules.

9. EVALUATION OF QUALIFICATIONS

Your submission is an opportunity to present your firm's qualifications to perform the work. It is important that your qualifications highlight your firm's capabilities as it relates to the SOW and the evaluation criteria. The evaluation factors and their relative importance for this requirement are as follows:

1. Professional qualifications necessary for satisfactory performance of required services; (20 Points)
2. Specialized experience and technical competence in the type of work required; (40 Points) Identify three important issues that represent significant potential risks to successful performance and describe your experience and qualifications in overcoming the type of issues and risks identified.
3. Capacity to accomplish the work in the required time; (20 Points) and
4. Past performance on contracts with Government agencies and private industry in terms of cost control, quality of work, and compliance with performance schedules. (20 Points)

Offerors are advised to pay close attention to the evaluation criteria, and ensure they address all aspects in their qualifications. The District will evaluate qualifications in accordance with this solicitation, and only consider information received in accordance with this solicitation.

Total Possible Points: 100

10. Scoring Methodology

The Evaluation Board will review the submittals with reference to the evaluation factors specified in Section 9.1, in accordance with the rating scale provided in this Section and will assign a quantitative rating for each of the evaluation factors.

A. Rating Scale

Numeric Rating	Adjective	Description
0	Unacceptable	Fails to meet minimum requirements; e.g., no demonstrated capacity, major deficiencies which are not correctable; Proposer did not address the factor.
1	Poor	Marginally meets the minimum requirements; major deficiencies which may be correctable.

2	Minimally Acceptable	Marginally meets minimum requirements; minor deficiencies which may be correctable.
3	Acceptable	Meets requirements; no deficiencies.
4	Good	Meets requirements and exceeds some requirements; no deficiencies.
5	Excellent	Exceeds most, if not all requirements; no deficiencies.

B. Application of Rating Scale

The rating scale is a weighting mechanism that will be applied to the point value for each evaluation factor to determine the Offeror’s score for each factor. The Offeror’s total score will be determined by adding the Offeror’s score in each evaluation factor. For example, if an evaluation factor has a point value range of zero (0) to fifty (50) points, using the Rating Scale above, if the District evaluates the Proposer’s response as “Good,” then the score for that evaluation factor is 4/5 of 50, or 40 points.

11. CONTRACTING OFFICER’S REPRESENTATIVE (CA)

Name: Abdullahi Mohamed
 Title: Civil Engineer supervisory
 Agency: District Department of Transportation
 Address: 55 M Street, SE Washington, DC 20003
 Telephone: 202-531-7563

If you have any questions regarding the solicitation or requirement, please contact Jeralyn Johnson, DDOT Contracting Officer, at jonalyn.johnson@dc.gov and ddot.aeschedule@dc.gov. All questions must be submitted via email to the designated Contracting Officer. The DDOT will not consider any questions received less than seven (7) calendar days before the date set for submission of Standard Form 330.

Sincerely,

Jeralyn Johnson
 Contracting Officer

C.C: Abdullahi Mohamed, CA